

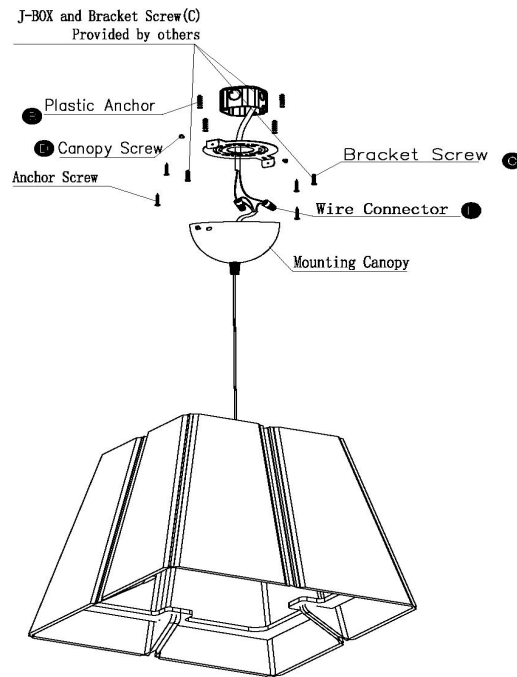


JOY LL0404SAC USER MANUAL



Please read this manual carefully before installation, keep it for future reference! Products are well packed and performing well before leaving our factory. Please strictly follow the instructions listed in the manual. Factory or distributor shall not be held responsible for any misoperation or damage caused by not following up the manual!

Installation Diagram

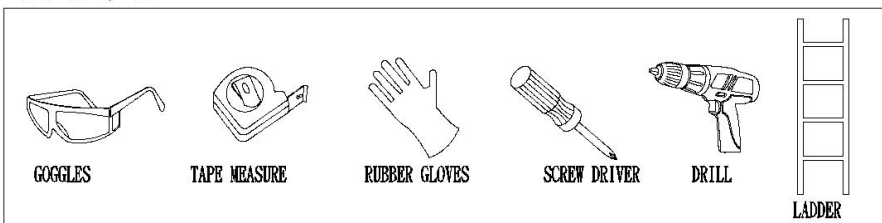


Step 1

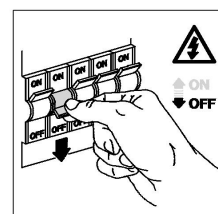
Shut "OFF" the electricity at the main fuse box.

Place the wall switch in the "OFF" position of the room where you are installing the fixture.

Tools You May Need



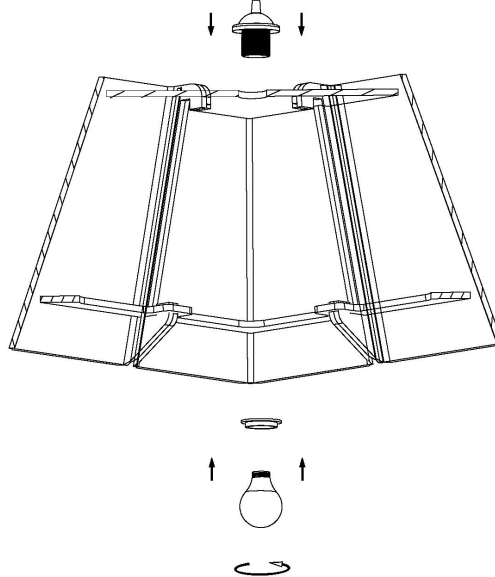
Circuit Box





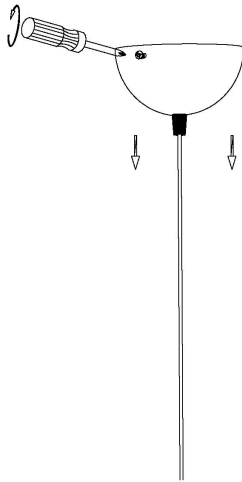
Step2

Install the bulb into the acoustic profile.



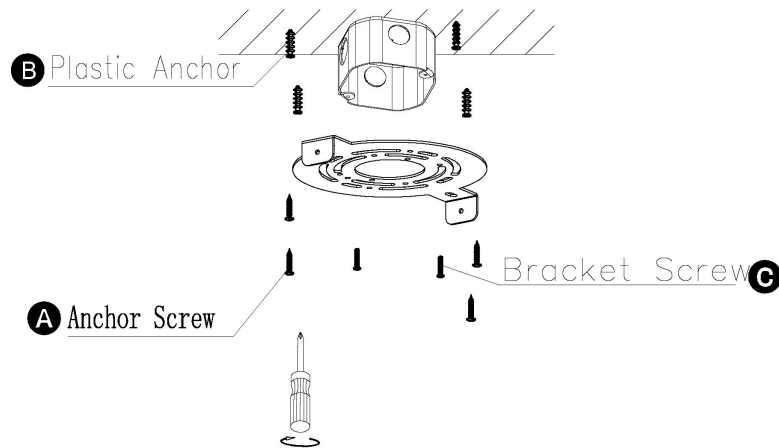
Step3

Use a screwdriver to loosen the screws between the mounting canopy and bracket from the side.



Step4

Take out a plastic pin, and drill 4pcs diameter 6mm holes on the ceiling according to the mounting bracket. Insert the expansion bolts into the holes. Use 2pcs M4*25mm screws to fix the mounting bracket with the junction box, refer to the picture shown below.

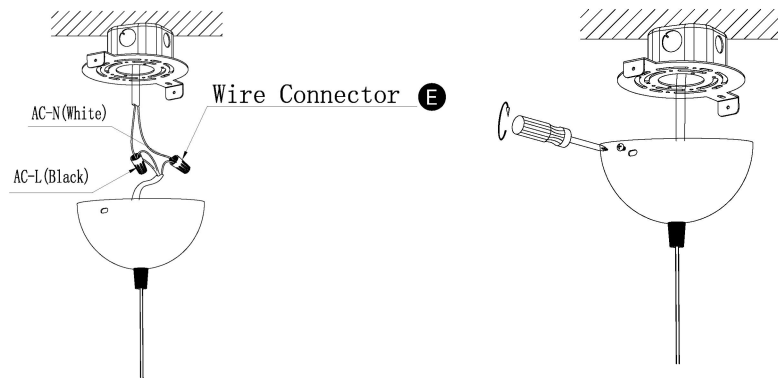


Attention: Must secure mounting plate at all connection points (junction box plus four outer points for small and medium size, or six outer points for large size) to support fixture weight appropriately. Not using all mounting points could damage the fixture and void the product warranty.

NOTE: Junction box used by Garvin 54171-S or equivalent / Provided by others

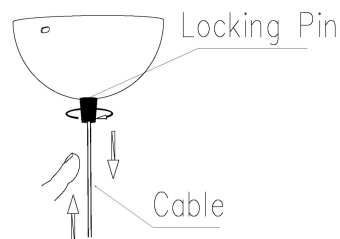
Step 5

Use wire connectors to connect L and N wires. After finishing, put all wires with connectors into the junction box. Use a screw to fix with mounting bracket and mounting canopy. Then loosen all the cables.



Step 6

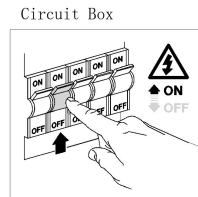
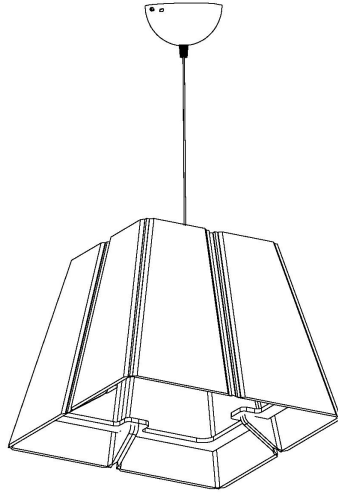
Adjust the fixture cable length, Then loosen all the cables.





Step 7

After finishing the installation, please turn on the electricity at the main fuse box and the lighting works.



Warnings

- MIN 90 °C SUPPLY CONDUCTORS/LES FILS D'ALIMENTATION 90 °C MIN
- DAMP LOCATIONS ONLY/POUR EMPLACEMENTS SECS SEULEMENT
- CAUTION – RISK OF FIRE/ATTENTION – RISQUE D'INCENDIE

THIS PRODUCT MUST BE INSTALLED IN ACCORDANCE WITH THE APPLICABLE INSTALLATION CODE BY A PERSON FAMILIAR WITH THE CONSTRUCTION AND OPERATION OF THE PRODUCT AND THE HAZARDS INVOLVED/CE PRODUIT DOIT ÊTRE INSTALLÉ SELON LE CODE D'INSTALLATION PERTINENT, PAR UNE PERSONNE QUI CONNAÎT BIEN LE PRODUIT ET SON FONCTIONNEMENT AINSI QUE LES RISQUES INHÉRENTS

- Application temperature for ring light is -20°C~40°C , humidity is 0~95%. Otherwise, there may be harm to the lifespan of the ring light.
- Please TURN OFF THE POWER before installation. This lamp must be installed and maintained by the electrician or qualified personnel.
- Pay attention to fire prevention, electricity, and shock resistance.
- Please do not cover the combustibles on the fixture.
- All screws and terminals should be tightened and tightly inserted. No loosening and improper connection are allowed. Attention should be paid to the polarity of components, power supply, driver, and so on.
- Terminals should be tightened and tightly inserted. No loosening or improper